

BRIGHT-TOOLS

BRIGHT-TOOLS

TOOL HOLDERS MOD

BRIGHT-TOOLS

BRIGHT-TOOLS

BRIGHT-TOOLS

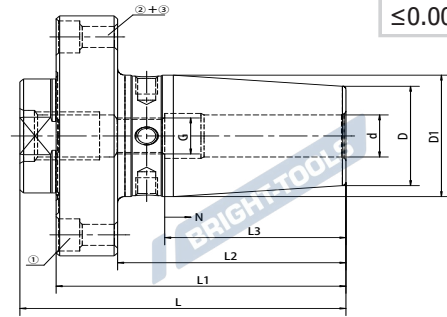
BRIGHT-TOOLS

BRIGHT-TOOLS

BRIGHT-TOOLS

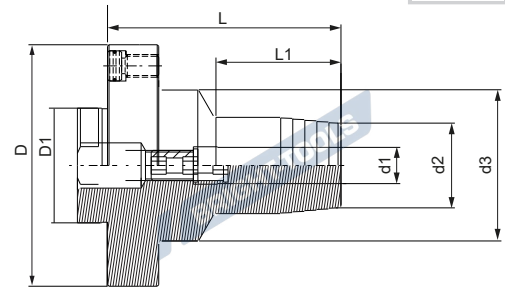
Shrink Chuck, Module

法兰热缩刀柄

MOD


Size	d	D	D1	L	L1	L2	L3	N	G
MOD60-SF06-70	06	21	27	80	70	57	36	10	M5
MOD60-SF08-70	08	21	27	80	70	57	36	10	M6
MOD60-SF10-70	10	24	31.5	80	70	57	42	10	M8x1
MOD60-SF12-70	12	24	31.5	80	70	57	47	10	M10x1
MOD70-SF14-75	14	27	34	85	75	60	46	10	M10x1
MOD70-SF16-75	16	27	34	85	75	60	49	10	M12x1
MOD80-SF18-80	18	33	40.5	90	80	63	50	10	M12x1
MOD80-SF20-80	20	33	42	90	80	63	51	10	M16x1
MOD100-SF25-80	25	44	53	92	80	59	57	10	M16x1
MOD100-SF32-80	32	44	53	92	80	59	61	10	M16x1

Hydraulic Chuck, Module 法兰液压刀柄



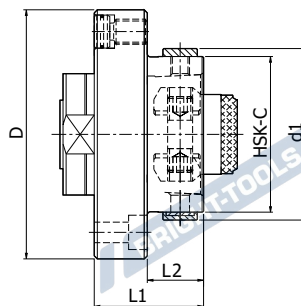
A ↗
≤0.003

MOD

Size	D	D1	d1	d2	d3	L1	L
MOD60-HY06-80	60	30	06	26	40	30	80
MOD60-HY08-80	60	30	08	28	40	30	80
MOD60-HY10-80	60	30	10	30	40	35	80
MOD60-HY12-80	60	30	12	32	40	40	80
MOD70-HY06-80	70	35	06	26	40	30	80
MOD70-HY08-80	70	35	08	28	40	30	80
MOD70-HY10-80	70	35	10	30	40	35	80
MOD70-HY12-80	70	35	12	32	40	40	80
MOD80-HY06-80	80	40	06	26	50	24	80
MOD80-HY08-80	80	40	08	28	50	25	80
MOD80-HY10-80	80	40	10	30	50	35	80
MOD80-HY12-80	80	40	12	32	50	44.5	80
MOD80-HY16-80	80	40	16	38	50	46	80
MOD80-HY20-80	80	40	20	42	50	47.5	80
MOD100-HY12-80	100	50	12	35	50	44.5	80
MOD100-HY16-80	100	50	16	38	50	46	80
MOD100-HY20-80	100	50	20	42	50	47.5	80
MOD100-HY25-90	100	50	25	57	63	59	90
MOD117-HY32-100	117	60	32	-	-	-	100

Flange Tool Holder Adatper Sleeve

法兰转换刀柄



Size	D	HSK-C	d1	L1	L2
MOD060-HSK32C-26	60	32	37	26	13
MOD070-HSK40C-30	70	40	45	30	15
MOD080-HSK50C-35	80	50	55	35	18
MOD100-HSK63C-60	100	63	70	60	39
MOD117-HSK80C-50	117	80	87	50	29
MOD140-HSK100C-70	140	100	110	70	42

BRIGHT-TOOLS

BRIGHT-TOOLS

BRIGHT-TOOLS

BRIGHT-TOOLS

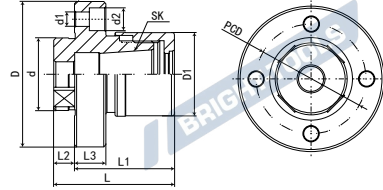
BRIGHT-TOOLS

BRIGHT-TOOLS

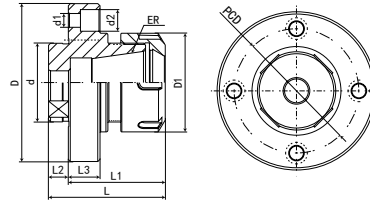
ER Collet Chuck, Module 法兰 ER 筒夹刀柄



Type 1



Type 2



Size	D	D1	d	d1	L	L1	L2	L3	PCD	FIG
MOD060-ER16-48	60	40	30	6	58	48	10	15	44	1
MOD070-ER16-48	70	40	35	7	58	48	10	15	53	1
MOD080-ER16-49	80	40	40	7	59	49	10	16	63	1
MOD080-ER32-49	80	50	40	7	59	49	10	16	63	2
MOD100-ER40-63	100	63	50	9	75	63	12	18	79	2

